



**SB** Sino Biological

## Antibody Validation for IHC



Ensures Accurate and Reliable  
Staining Results

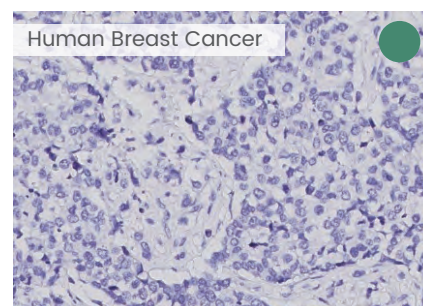
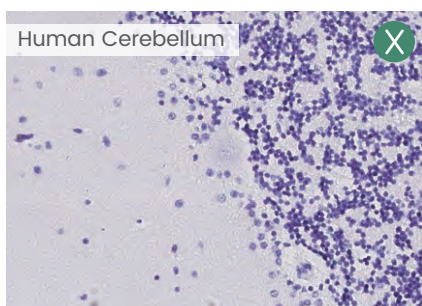
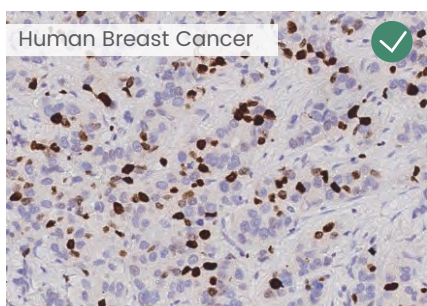
Sino Biological is an international reagent supplier and service provider. The company specializes in recombinant protein production and antibody development. All of Sino Biological's products are independently developed and produced. The company's ever-growing portfolio of products includes recombinant proteins, monoclonal antibodies, ELISA assay kits, expression clones, cell culture media, and other molecular biology tools. Sino Biological offers over 4000 antibodies validated for IHC to accelerate your study.

## Specificity Verification

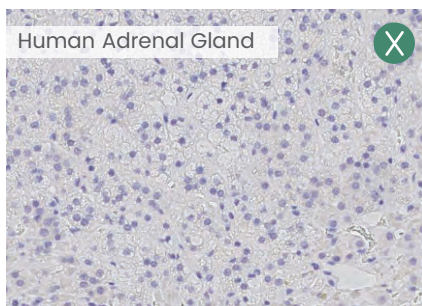
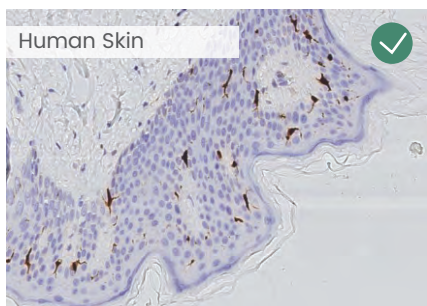
### Multiple Experimental Controls

- ✓ Positive Control: Tissue Known to Express the Target Protein
- ✗ Negative Control: The Target Protein not Present in the Tissue
- Blank Control: No Primary Antibody Added

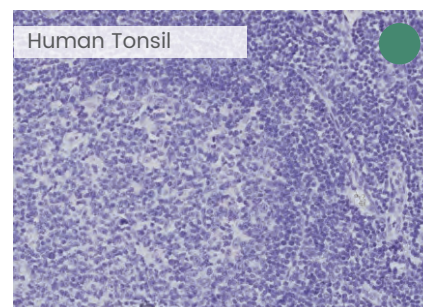
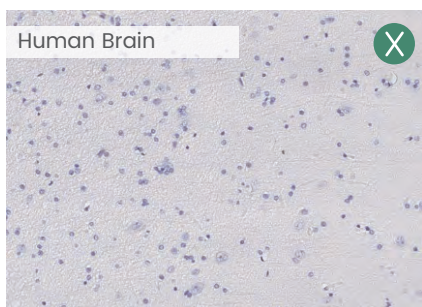
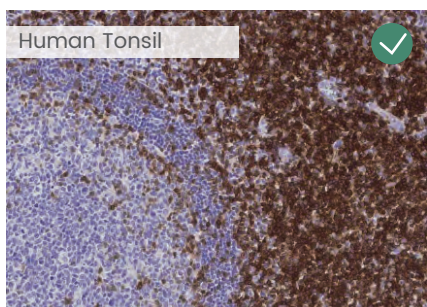
#### Anti-Ki67 Antibody (Cat#: 100130-MM19, Mouse MAb)



#### Anti-S100B Antibody (Cat#: 100508-R034, Rabbit MAb)



#### Anti-CD3e Antibody (Cat#: CT026-R301, Rabbit MAb)

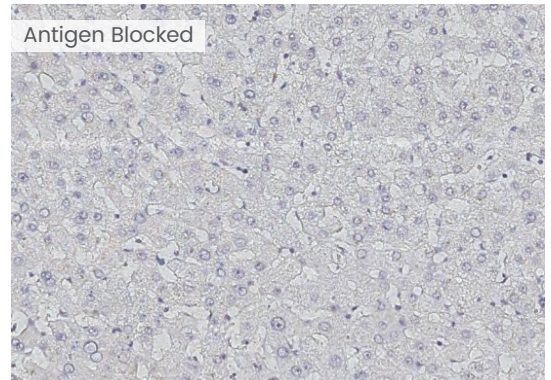
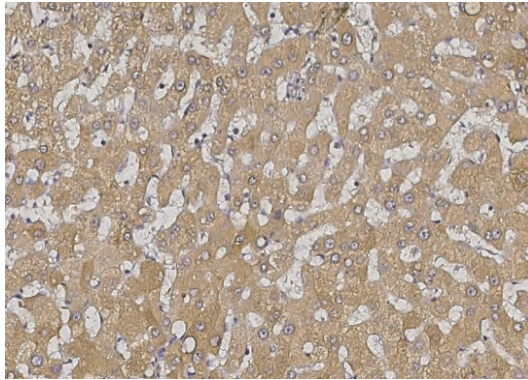


## ○ Antigen Blocking

Antigen blocking assay is used to validate the specificity of IHC antibodies. Immunohistochemical analysis results show that antibodies developed by Sino Biological are highly specific to target immunogen.

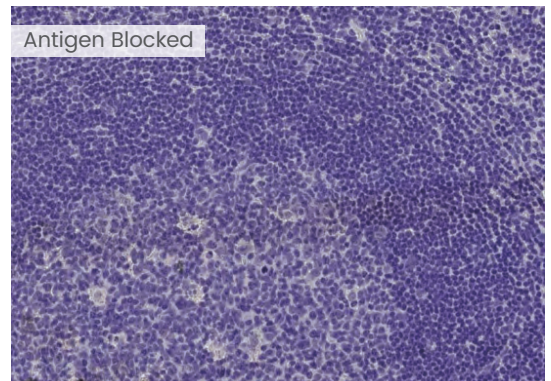
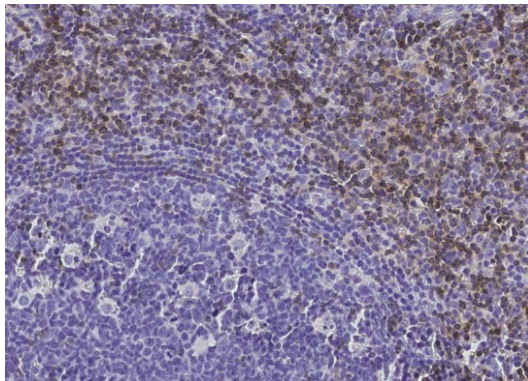
### Anti-AGT Antibody

Cat#: 10994-RP02  
Type: Rabbit PAb  
Tissue: Human Liver



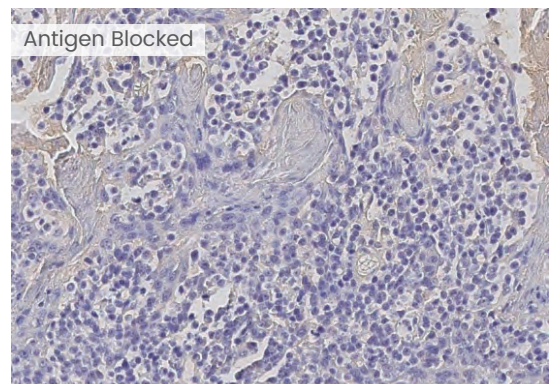
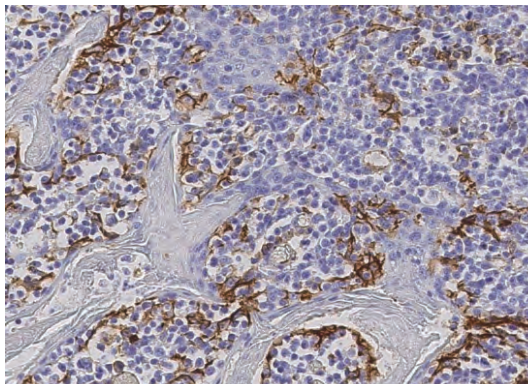
### Anti-CD3e Antibody

Cat#: CT026-R301  
Type: Rabbit MAb  
Tissue: Human Tonsil



### Anti-CD31 Antibody

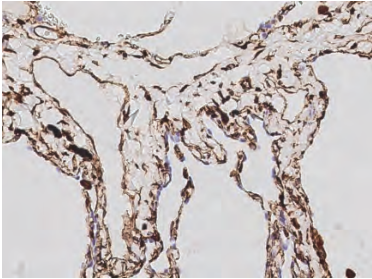
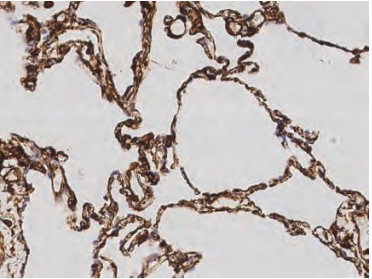
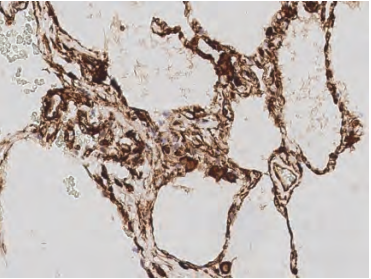
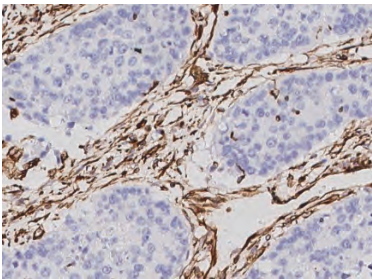
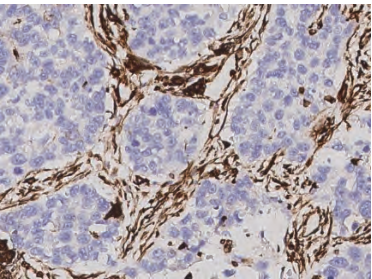
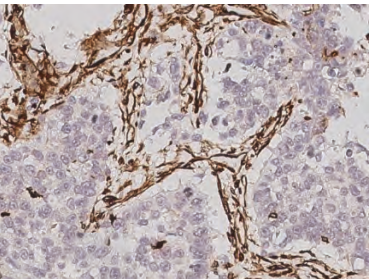
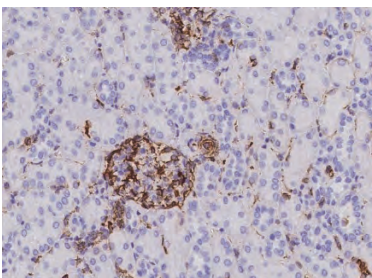
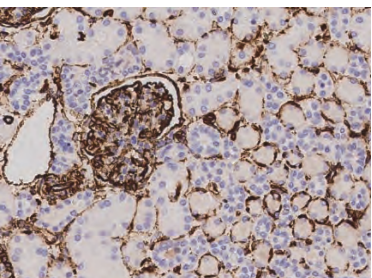
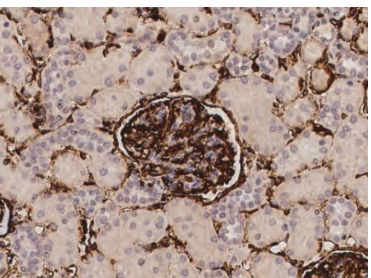
Cat#: 10148-R078  
Type: Rabbit PAb  
Tissue: Human Tonsil



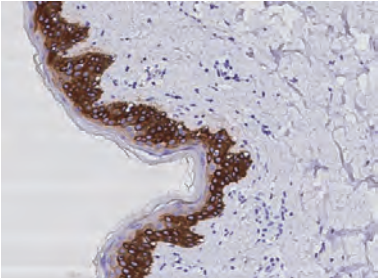
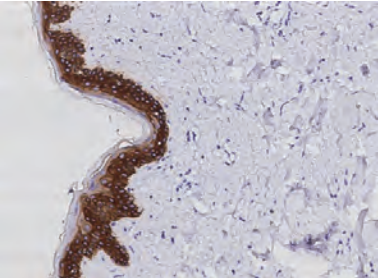
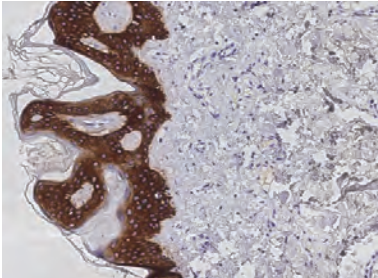
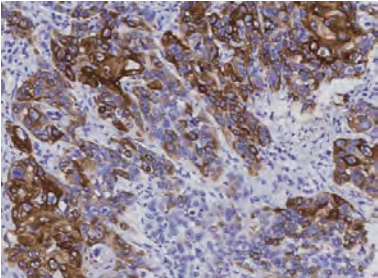
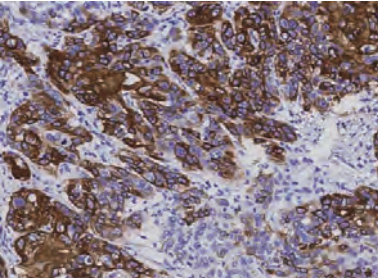
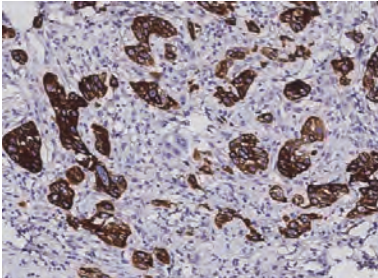
# Sensitivity Verification

Efficient target detection can sufficiently reveal high sensitivity of the IHC antibody. Sino Biological used antibodies at different dilutions to detect antigens expressed on various tissues, and the results show that our antibody can efficiently detect target at low concentrations.

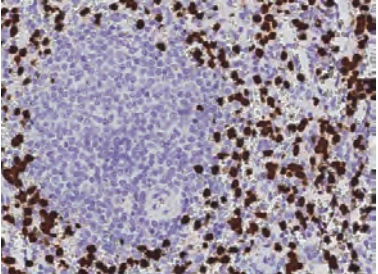
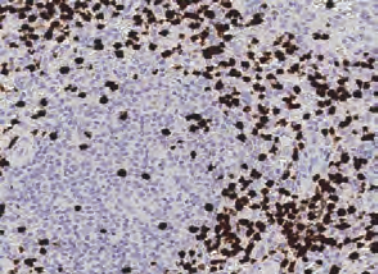
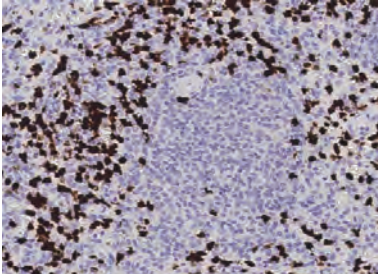
## Anti-Vimentin Antibody (Cat#: 100254-R001, Rabbit MAb)

Tissue \ Ab Conc.	0.01µg/mL	0.5µg/mL	5µg/mL
Human Lung			
Human Squamous Carcinoma			
Human Kidney			

**Anti-KRT14 Antibody (Cat#: 100129-R101, Rabbit MAb)**

Tissue \ Ab Conc.	0.05µg/mL	0.5µg/mL	5µg/mL
Human SKin			
Human Esophageal Carcinoma			

**Anti-S100A8 Antibody (Cat#: 11138-MM03, Mouse MAb)**

Tissue \ Ab Conc.	0.5µg/mL	1µg/mL	15µg/mL
Human Spleen			

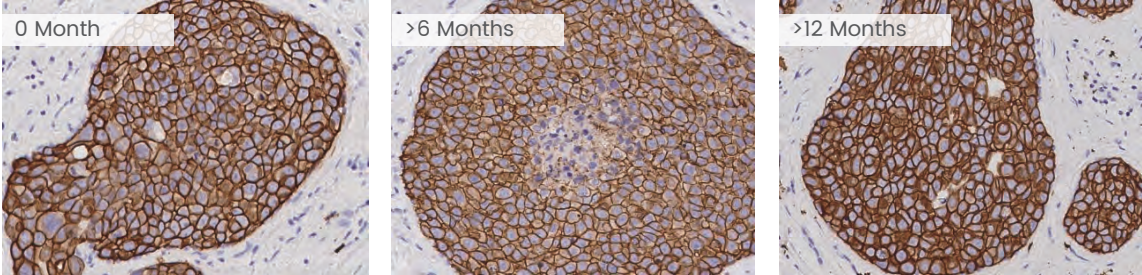
## Stability Verification

Stability can affect data consistency and experiment repeatability, and it is one of the most important characters of IHC antibodies. Sino Biological has done a variety of assays to verify the stability of antibodies.

### ○ Real-time Stability

To Determine Expiration Date and Shelf Life

**Anti-HER2 Antibody**  
 Cat#: 10004-MM40  
 Type: Mouse MAb  
 Tissue: Human Breast  
 Cancer Tissue

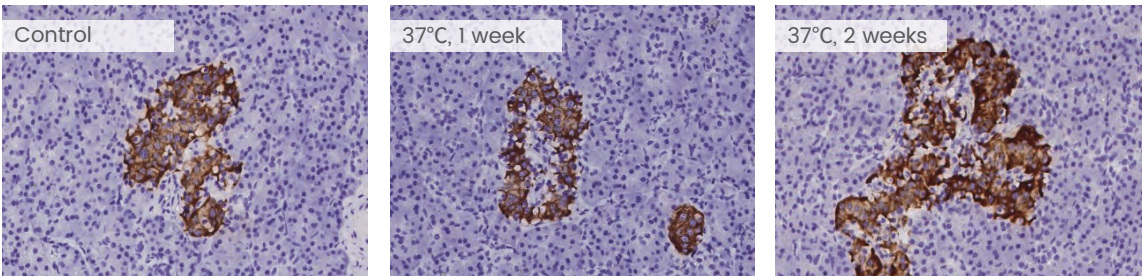


0 Month      >6 Months      >12 Months

### ○ Acceleration Stability

To Predict the Long-term Storage Time

**Anti-Insulin Antibody**  
 Cat#: 11038-MM17  
 Type: Mouse MAb  
 Tissue: Human Pancreas



Control      37°C, 1 week      37°C, 2 weeks

### ○ Batch-to-Batch Stability

To Ensure the Reliability and Repeatability in IHC Assay

**Anti-P4HB Antibody (Cat#: 310905-T42, Rabbit PAb)**

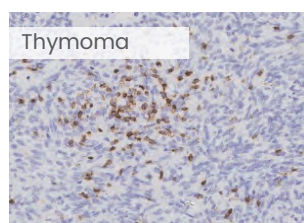
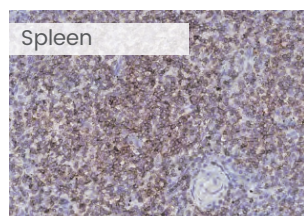
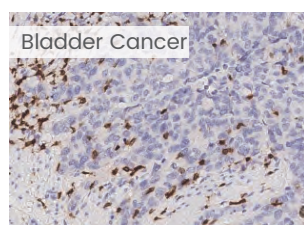
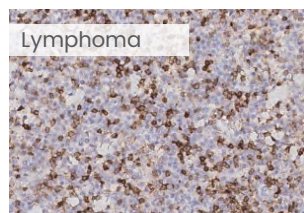
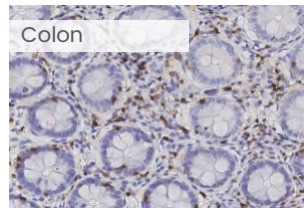
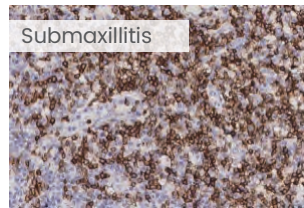
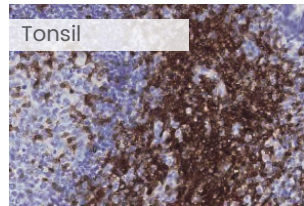
<b>Tissue: Human Liver</b>				<b>Tissue: Human Brain</b>			
							
Batch 1	Batch 2	Batch 1	Batch 2	Batch 3	Batch 4	Batch 3	Batch 4

## Validated by Multiple Tissues

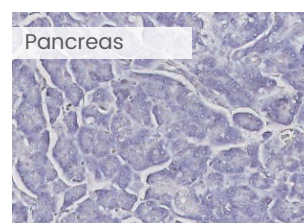
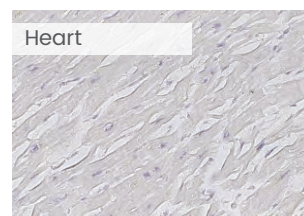
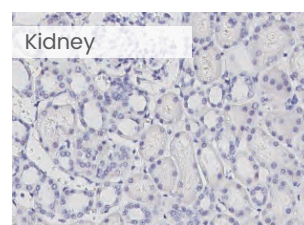
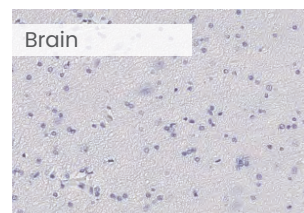
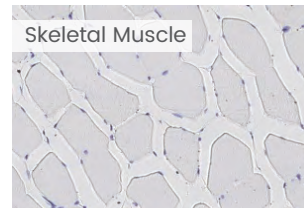
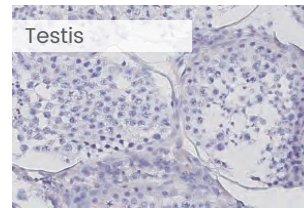
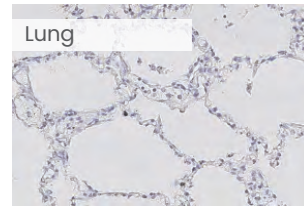
Target Proteins are diversely expressed on different tissues. The protein can be highly expressed in some tissues, and can be hardly ever expressed in other tissues. Sino Biological has done various tissue validations to confirm the specificity of IHC antibodies.

### ○ Anti-CD3e (Cat#: CT026-R301, Rabbit MAb)

#### Positive Tissue

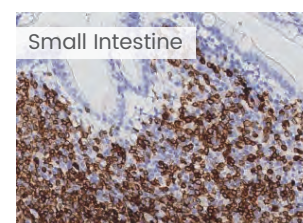
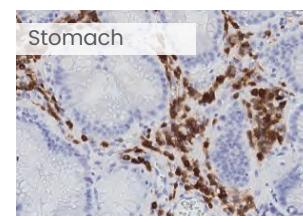
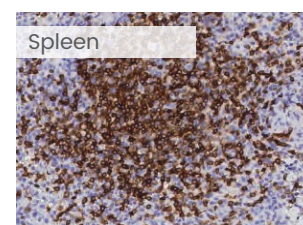
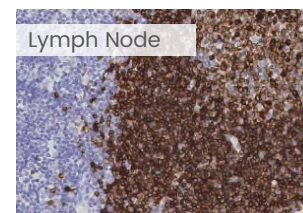
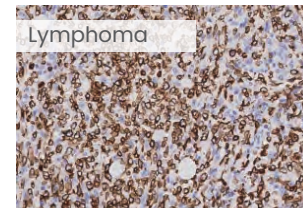
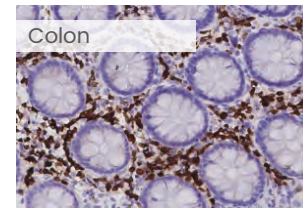
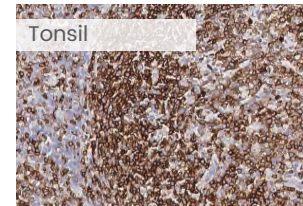


#### Negative Tissue

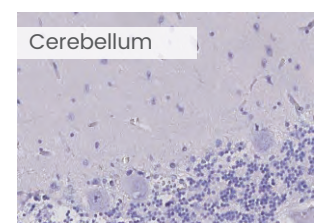
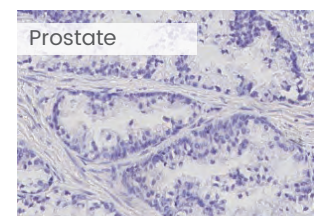
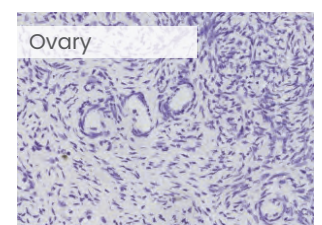
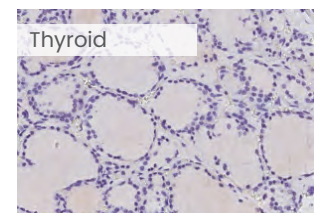
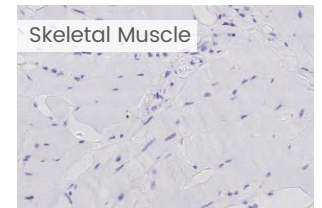
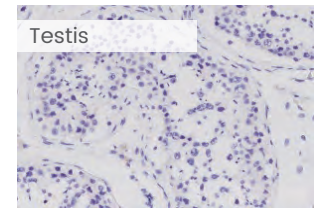
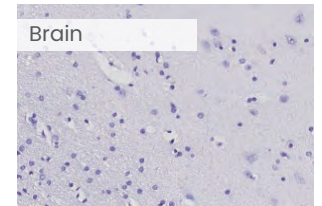


### ○ Anti-CD79a (Cat#: 100128-R001, Rabbit MAb)

#### Positive Tissue

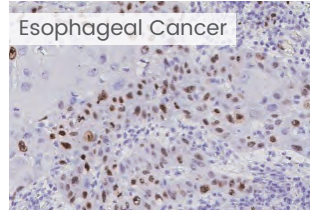
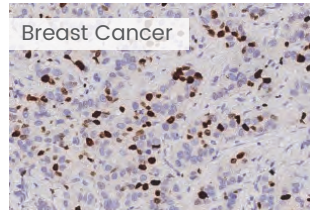
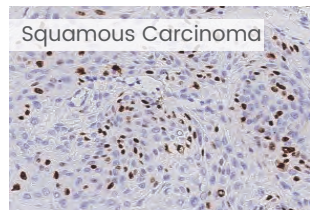
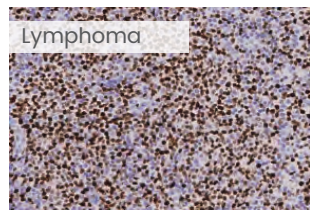
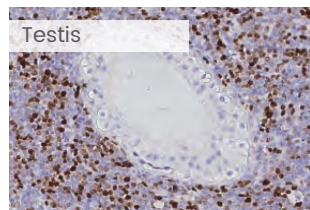
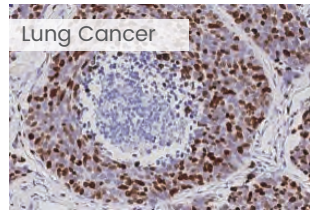
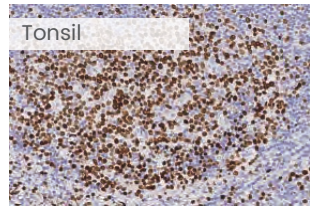


#### Negative Tissue

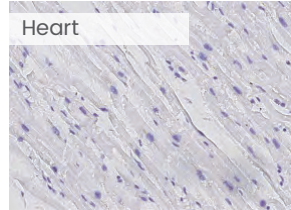
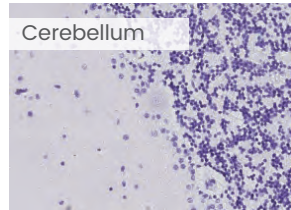
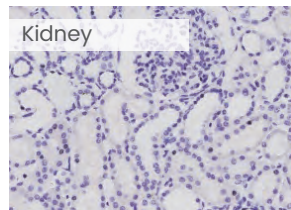
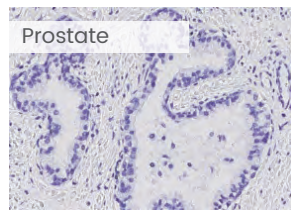
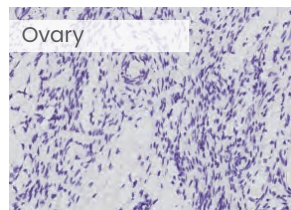
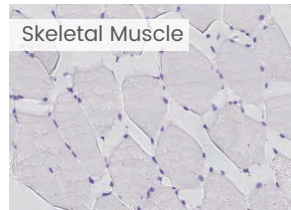
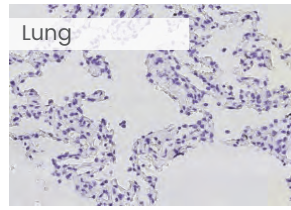


○ Anti-Ki-67 (Cat#: 100130-MM19, Mouse MAb)

Positive Tissue

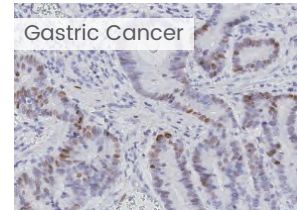
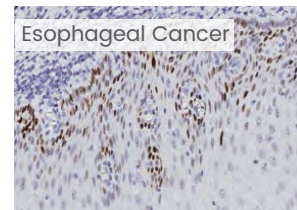
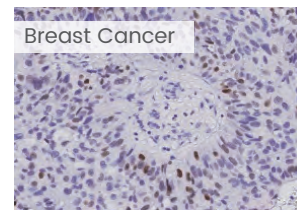
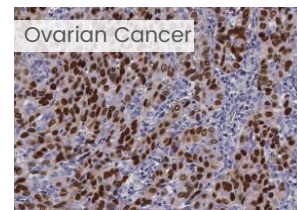
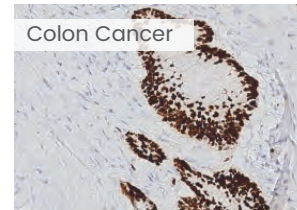
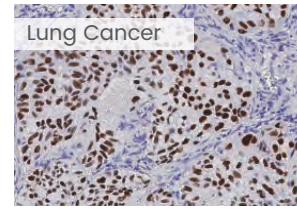


Negative Tissue

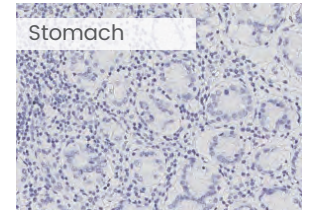
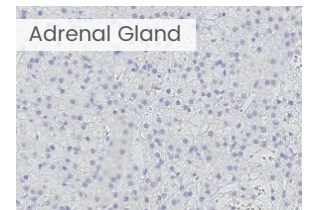
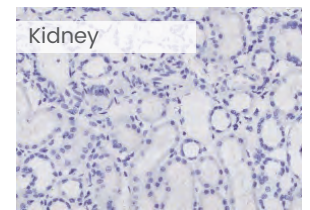
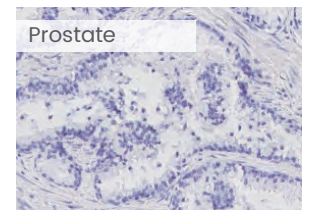
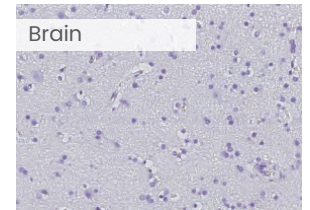
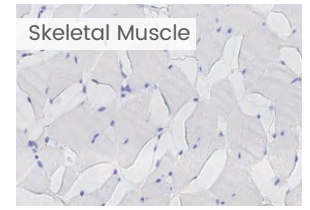


○ Anti-p53 (Cat#: 90001-R002, Rabbit MAb)

Positive Tissue



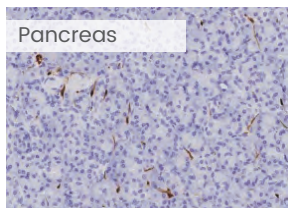
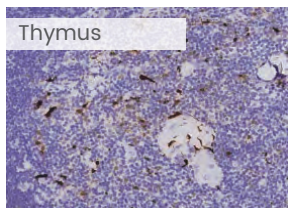
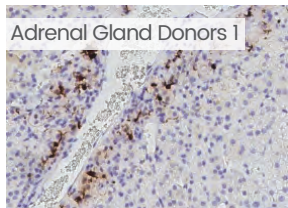
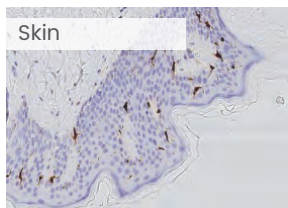
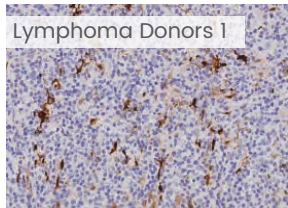
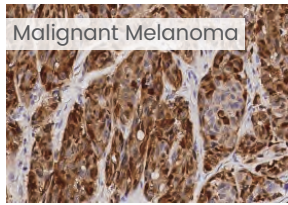
Negative Tissue



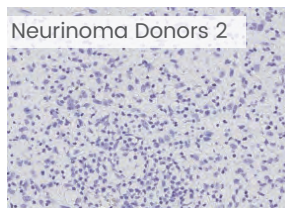
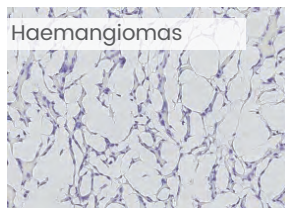
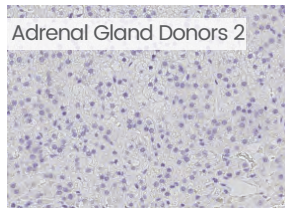
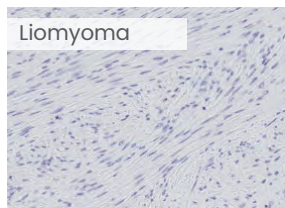
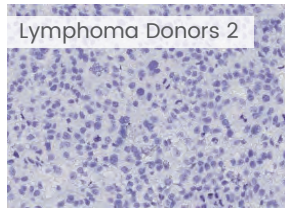
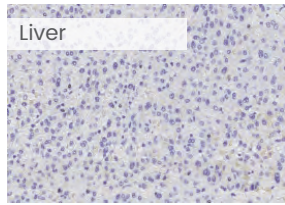


○ Anti-S100B (Cat#: 100508-R034, Rabbit MAb)

**Positive Tissue**

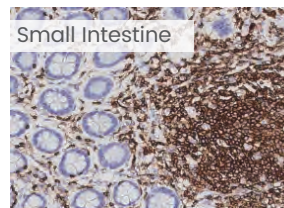
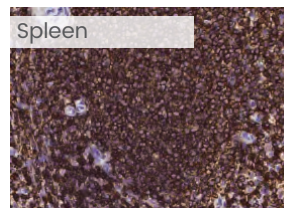
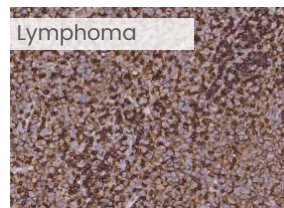
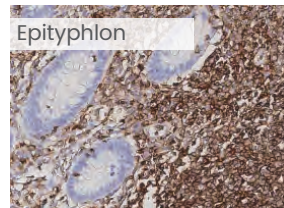
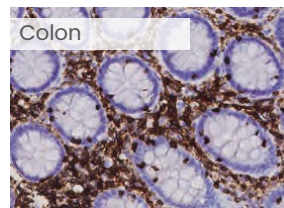
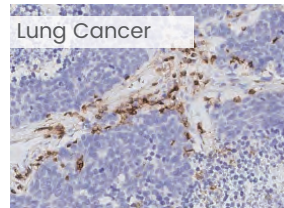
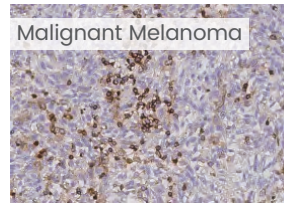


**Negative Tissue**

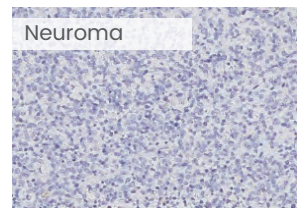
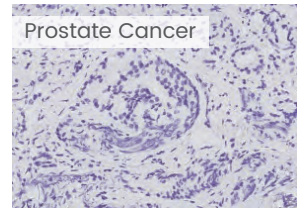
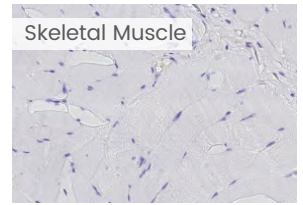


○ Anti-CD45 (Cat#: 100342-R145, Rabbit MAb)

**Positive Tissue**



**Negative Tissue**



## Cross-reactivity among Different Species

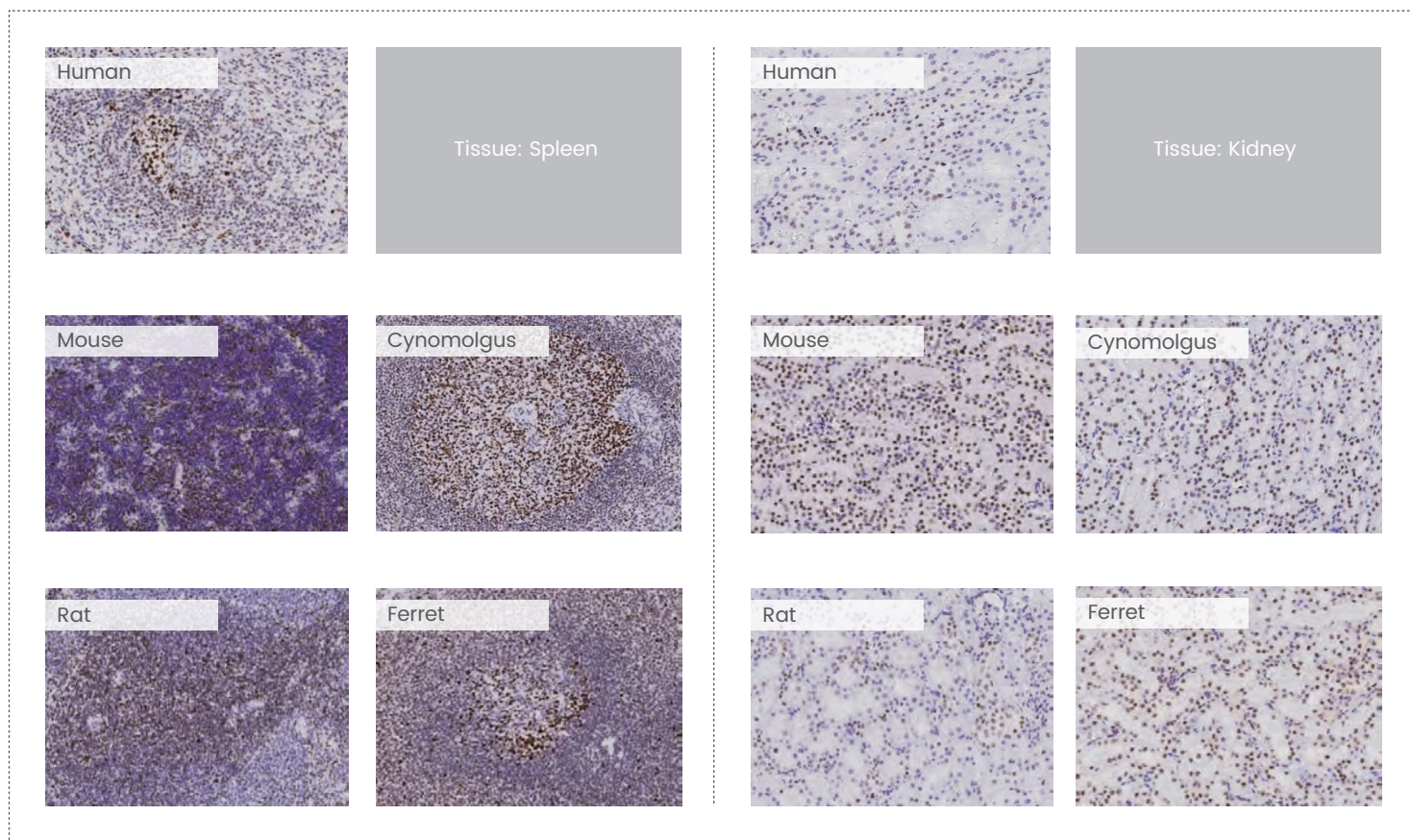
Proteins can share homology sequence among different species. For IHC antibodies to this kind of target protein, Sino Biological has tested the cross-reactivity among different species. Results show that those antibodies can detect the target from different species very well.

### ○ Anti-MSH6 Antibody (Cat#: 100973-R035)

Antigen: Human MSH6

Ab Type: Rabbit MAb

Ig Type: Rabbit IgG

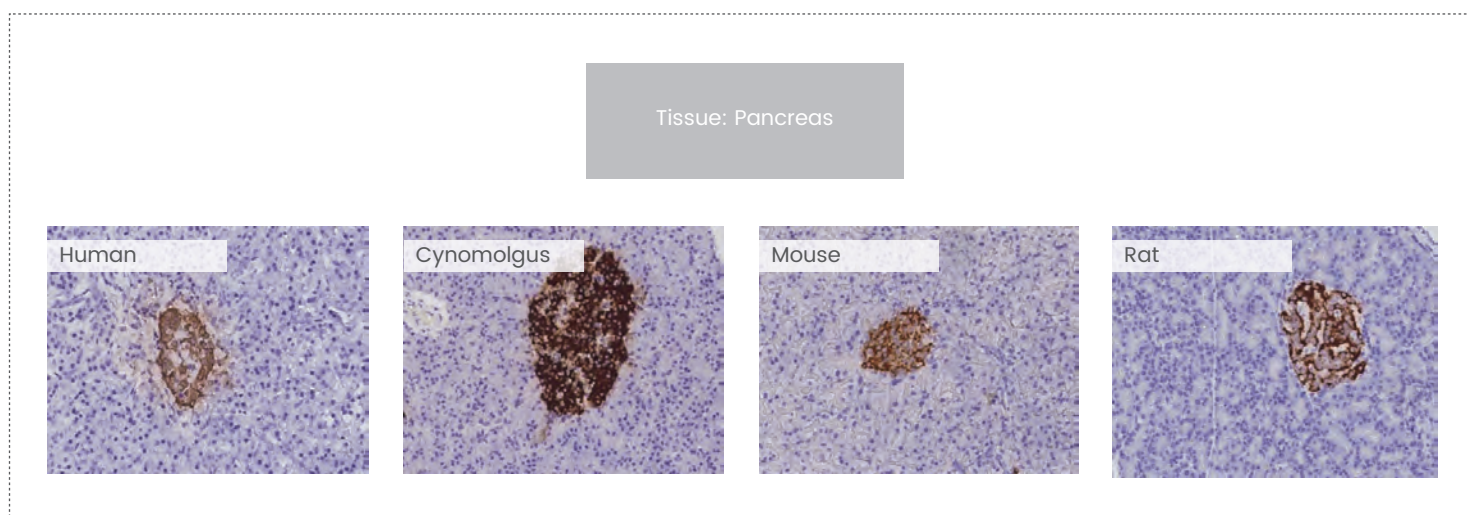


### ○ Anti-Insulin Antibody (Cat#: 11038-MM14)

Antigen: Human Insulin

Ab Type: Mouse MAb

Ig Type: Mouse IgG



# Advanced Antibody Development Platforms

## Diversified Antibody Development technologies



Single B cell Technology



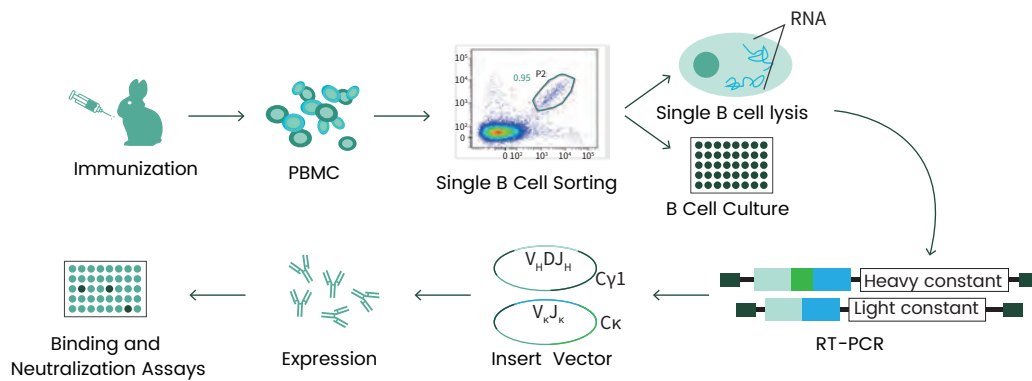
Phage Library Technology



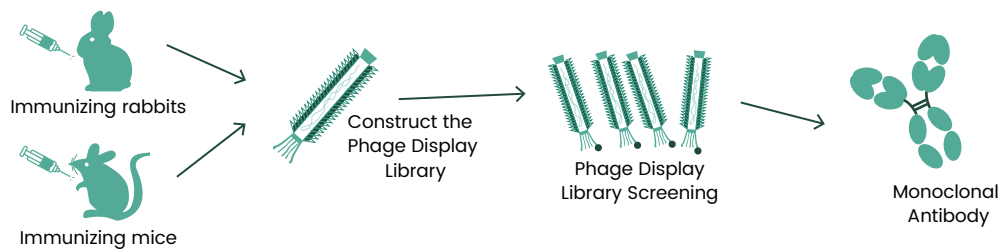
Mouse Hybridoma Technology



Rabbit Polyclonal Ab Technology



Single B cell technology

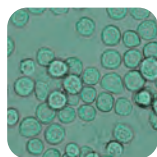


Phage library technology

## Recombinant Antibody Expression Platforms



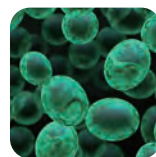
HEK293/ CHO cell



Insect cell



*E.coli*



Yeast

**Sino Biological US Inc.**

Address: 1400 Liberty Ridge Drive, Suite 101,  
Wayne, PA 19087

Tel: +1-215-583-7898 Fax: +1-267-657-0217

Website: [www.sinobiological.com](http://www.sinobiological.com)

Email: [order\\_us@sinobiological.com](mailto:order_us@sinobiological.com)

Follow us on

